



Quick Start Guide Wireless N Gigabit Router

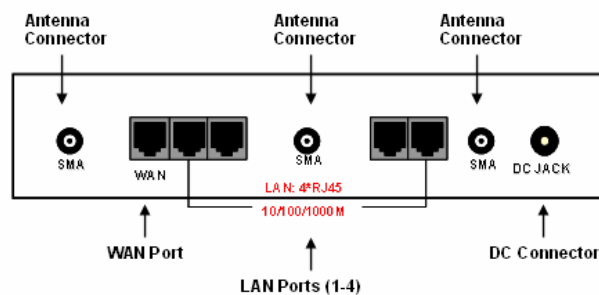
The Wireless-N Gigabit Router is a draft 802.11n compliant device that delivers up to 6x faster speeds than 802.11g while staying backward compatible with 802.11g and 802.11b devices.

It is not only a Wireless Access Point, which lets you connect to the network without wires. There's also a built-in 4-port full-duplex 10/100/1000 Gigabit Switch to connect your wired-Ethernet devices together. The Router function ties it all together and lets your whole network share a high-speed cable or DSL Internet connection.

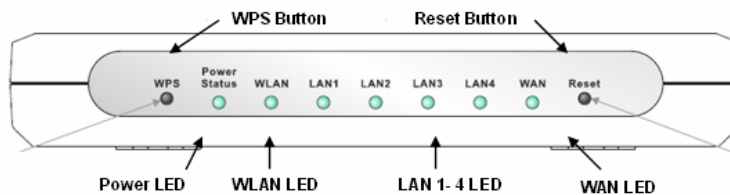


This Quick Start Guide will guide you through the steps of setting up the device using the Wizards. For advanced configuration, refer to the User's Manual in the CD-ROM provided.

Rear Panel



Front Panel



Step	Label	Description
1	LAN Ports (1 – 4)	Use an Ethernet cable to connect each port to a computer on your Local Area Network (LAN).
2	WAN Port	Use an Ethernet cable to connect this port to your WAN router.
3	DC Connector	Use the power cable and connect the adapter to the power socket on the wall, and the DC inlet into the DC connector.
4	Antenna Connector	Connect the three antennas to the SMA connectors.
	Connection / Activity LED	This LED will light up once an Ethernet cable is connected to one of the LAN ports.
	WAN LED	This LED will light up once an Ethernet cable is connected to WAN (Internet) port.
	WLAN LED	This LED will light up once the RF (wireless LAN) feature is enabled
	Power LED	This LED will light up once the power cable is connected to the DC connector.
	Reset Button	Use this button to reset the device. You can restore the device back to its factory default settings by holding down on this button for 5 seconds.
	WPS	WPS (Wireless Push Button) is used for WiFi Protected Setup. By pressing this button, the security settings of the device will automatically synchronize with other wireless devices on your

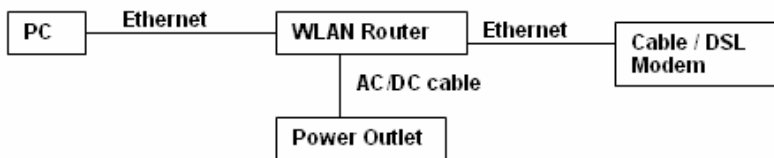


Quick Start Guide Wireless N Gigabit Router

network that support Wi-Fi Protected Setup.

Hardware Installation

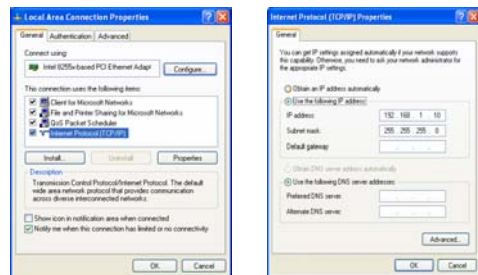
1. Place the unit in an appropriate place after conducting a site survey.
2. Plug one end of the Ethernet cable into the LAN port of the device and another end into your PC/Notebook.
3. Plug one end of another Ethernet cable to WAN port of the device and the other end into you cable/DSL modem (Internet)
4. Insert the DC-inlet of the power adapter into the port labeled “DC-IN” and the other end into the power socket on the wall.



IP Address Configuration

The default IP address of the device is **192.168.1.2**. In order to log into this device, you must first configure the TCP/IP settings of your PC/Notebook.

1. In the control panel, double click Network Connections and then double click on the connection of your Network Interface Card (NIC). You will then see the following screen.
2. Select **Internet Protocol (TCP/IP)** and then click on the **Properties** button. This will allow you to configure the TCP/IP settings of your PC/Notebook.
3. Select **Use the following IP Address** radio button and then enter the IP address (192.168.1.21) and subnet mask (255.255.255.0). Ensure that the IP address and subnet mask are on the same subnet as the device.
4. Click on the **OK** button to close this window, and once again to close LAN properties window.



Logging In

1. To configure the device through the web-browser, enter the IP address of the device (default: **192.168.1.2**) into the address bar of the web-browser and press **Enter**.
2. After connecting to the IP address, the web-browser will display the login page. Select **Admin** from the drop-down list and then leave the password field blank. Click on the **Log In** button to continue.

User Name : Admin

Password :

Log In



Quick Start Guide Wireless N Gigabit Router

Internet Connection Wizard

1. Click on the **Internet Connection Setup Wizard** button to begin the process.
2. The Wizard requires that you configure the password, time zone, and Internet (WAN) connection. Click on the **Next** button to continue.
3. By default, the device does not use a password. Specify a password for administrator access to the device, then type the password once more in the **Verify Password** field. Click on the **Next** button to continue.
4. Select your time zone from the drop-down list. Click on the **Next** button to continue.
5. The next step in the wizard is the Internet Connection, select the WAN connection type from the list, and then click on the **Next** button to continue with the wizard.

WAN DHCP

1. Select the **DHCP Connection (Dynamic IP Address)** radio button and then click on the **Next** button.
2. You have the option of cloning your PC's MAC address onto the device. Click on the **Clone Your PC's MAC Address** to automatically copy the MAC address. You may also specify a host name. Click on the **Next** button to continue.
3. The WAN configuration is complete. Click on the **Connect** button to connect to the Internet.

PPPoE

1. Select the **PPPoE** radio button and then click on the **Next** button.
2. **Address Mode:** PPPoE can be used with a dynamic or static IP address. If you select the **Dynamic IP** radio button, then the IP address in the next field is not required. However, if you select the **Static IP** radio button, then the IP address in the next field is required.
3. **User Name:** Specify the user name which is provided by your ISP.
4. **Password:** Specify the password which is provided by your ISP, and then verify it once again in the next field.
5. **Service Name:** Specify the name of the ISP.
6. Click on the **Next** button to continue.
7. The WAN configuration is complete. Click on the **Connect** button to connect to the Internet.

PPTP

1. Select the **PPTP** radio button and then click on the **Next** button.
2. **Address Mode:** PPTP can be used with a dynamic or static IP address. If you select the **Dynamic IP** radio button, then the IP address in the next field is not required. However, if you select the **Static IP** radio button, then the IP address in the next field is required.
3. **PPTP Address:** Specify the IP address.
4. **PPTP Subnet Mask:** Specify the subnet mask for the IP address.
5. **PPTP Gateway IP Address:** Specify the IP address of the PPTP gateway.
6. **PPTP Server IP Address:** If the PPTP Server's IP address is different from the default gateway, then you may specify it here.
7. **User Name:** Specify the user name which is provided by your ISP.
8. **Password:** Specify the password which is provided by your ISP, and then verify it once again in the next field.
9. Click on the **Next** button to continue.
10. The WAN configuration is complete. Click on the **Connect** button to connect to the Internet.



Quick Start Guide Wireless N Gigabit Router

L2TP

1. Select the **L2TP** radio button and then click on the **Next** button.
2. **Address Mode:** L2TP can be used with a dynamic or static IP address. If you select the **Dynamic IP** radio button, then the IP address in the next field is not required. However, if you select the **Static IP** radio button, then the IP address in the next field is required.
3. **PPTP Address:** Specify the IP address
4. **PPTP Subnet Mask:** Specify the subnet mask for the IP address.
5. **PPTP Gateway IP Address:** Specify the IP address of the PPTP gateway.
6. **PPTP Server IP Address:** If the PPTP Server's IP address is different from the default gateway, then you may specify it here.
7. **User Name:** Specify the user name which is provided by your ISP.
8. **Password:** Specify the password which is provided by your ISP, and then verify it once again in the next field.
9. Click on the **Next** button to continue.
10. The WAN configuration is complete. Click on the **Connect** button to connect to the Internet.

Static IP Address

1. Select the **Static IP Address Connection** radio button and then click on the **Next** button.
2. **IP Address:** Specify the IP address for this device, which is assigned by your ISP.
3. **Subnet Mask:** Specify the subnet mask for this IP address, which is assigned by your ISP.
4. **Gateway Address:** Specify the IP address of the default gateway, which is assigned by your ISP.
5. **Primary/Secondary DNS Address:** Specify the primary and secondary IP address, which is assigned by your ISP.
6. Click on the **Next** button to continue.
7. The WAN configuration is complete. Click on the **Connect** button to connect to the Internet.

Static IP Address

1. Select the **BigPond** radio button and then click on the **Next** button.
2. **User Name:** Specify the user name which is provided by your ISP.
3. **Password:** Specify the password which is provided by your ISP, and then verify it once again in the next field.
4. **BigPond Server:** Specify the server name or IP address as specified by your ISP.
5. Click on the **Next** button to continue.
6. The WAN configuration is complete. Click on the **Connect** button to connect to the Internet.

Wireless Network Setup

1. Click on the **Wizard_Wireless** link under the **Basic** menu, and then click on the **Wireless Network Setup Wizard** button. The wizard will inform you that there are two options: **auto** and **manual**.

Automatic Network Setup



Quick Start Guide Wireless N Gigabit Router

1. If you select the **Auto** option, then the device will automatically configure the SSID and security mode.
2. Click on the **Next** button to continue.
3. The wizard has automatically configured the SSID and security mode for the device. Click on the **Save** button to complete the setup.

Manual Network Setup

1. If you select the **Manual** option, then you will be required to specify the SSID and select the appropriate network security.
2. Click on the **Next** button to continue. The wireless wizard will inform you that there are three major steps in the process. name your wireless network, secure your wireless network and set your wireless security password
3. Click on the **Next** button to continue.
4. Specify the Wireless Network Name (SSID) for the device.
5. Click on the **Next** button to continue.
6. This step requires that you configure the security features based on your needs. The following options are available.
 - a. **BEST** – Select this option if your wireless adapters support WPA2
 - b. **BETTER** – Select this option if your wireless adapters support WPA
 - c. **GOOD** – Select this option if your wireless adapters do not support WPA, but supports WEP instead
 - d. **None**: Select this option if you do not want to activate any security features.
7. Select a level of security and then click on the **Next** button to continue.
8. If you do not want to setup security, then select the **NONE** radio button.

Wireless Security Level: BEST (WPA2)

1. Select the **BEST** radio button which supports WPA2 encryption. Then click on the **Next** button.
2. Enter a security password between 2 and 20 characters then click on the **Next** button.
3. The setup is complete. Click on the **Save** button and then reboot the device.

Wireless Security Level: BETTER (WPA)

1. Select the **BETTER** radio button which supports WPA encryption. Then click on the **Next** button.
2. Enter a security password between 2 and 20 characters then click on the **Next** button.
3. The setup is complete. Click on the **Save** button and then reboot the device.

Wireless Security Level: GOOD (WEP 64/128-bit)

1. Select the **GOOD** radio button which supports WEP encryption. Then click on the **Next** button.
2. Enter a security password between 2 and 20 characters then click on the **Next** button.
3. The setup is complete. Click on the **Save** button and then reboot the device.

Wireless Security Level: None (Security Disabled)

1. Select the **NONE** radio button if you do not want to activate any security features. Then click on the **Next** button.
2. The setup is complete. Click on the **Save** button and then reboot the device.

The configuration of the router is complete. You can now securely connect to the Internet. For advanced configuration, refer to the User's Manual in the CD-ROM provided.